

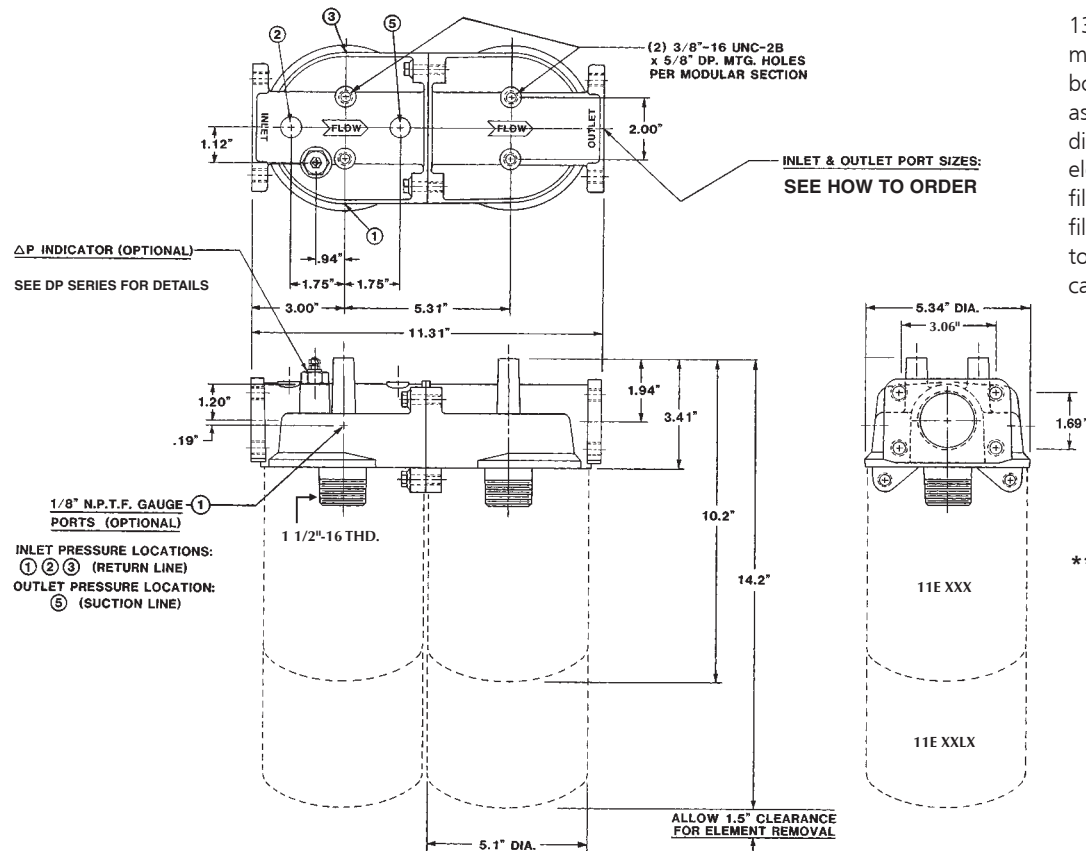
# 13 Series

Modular Line Type Spin-On Filter  
with  $\Delta P$  Indicator Option



- Flows up to: 120 GPM (Return) 50 GPM (Suction)  
 Port Sizes:   
 > 1 1/2" NPTF  
 > 1 7/8" - 12 UN (SAE - 24)  
 > 2" (4) Bolt Flange  
 Pressure: 200 PSI Max. Operating  
**Warning: 80 PSI  $\Delta P$  max. without by-pass valve.**  
 Temperature: Up to +250° F. Operating  
**Limited by Indicator Selection**  
 Applications: Petroleum based fluids only.  
 Consult factory for synthetic fluids.

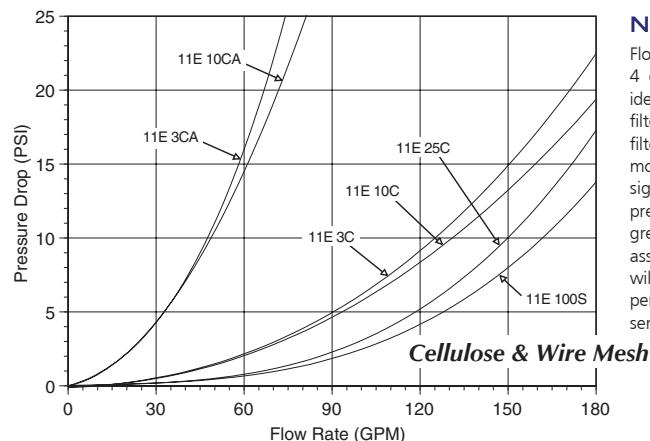
## SPIN-ON FILTERS



13-Series filters consist of two or more spin-on filter head modules bolted together to form a complete assembly. Inlet flow is equally divided among all spin-on filter elements (parallel flow). Multiple filter head module design allows filter elements to be manifolded together creating greater flow capacities and longer service life.

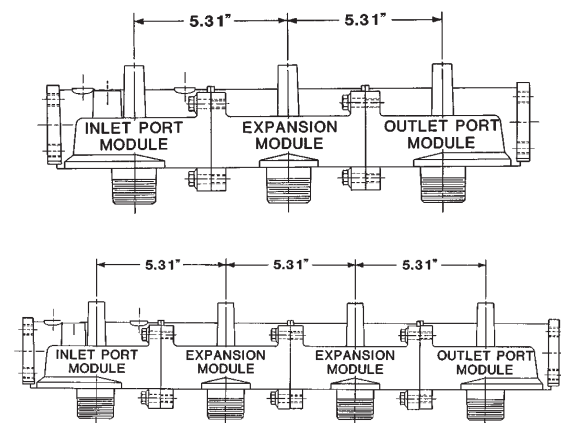
**\*\*Please see 11 Series for replacement elements\*\***

**Average Pressure Drop Through Clean Filter Assembly  
With 150 SUS Oil At 105° F.**



### NOTE:

Flow data for a 13-Series 4 element filter head is identical to the 3 element filter above. MF-Series filter heads with 4 or more elements will not significantly reduce pressure drop or allow greater flow through the assembly. The 13-Series will lengthen the time periods between element servicing.



# 13 Series How to Order

Example Part Number

				A	B	C				D	E	F	G		H	I	J	K	
				13	A	-	24	S	24	S	-	M2	10C	V	-	5	2	-	V
Description				Code															
Section A																			
Filter Series	Spin On Filters with Dual Head			13	13														
Section B																			
Part Breakdown	Assembly (Head and Element)			A	A														
	Element Only			E	E														
	Head Only			H	H														
Section C																			
Port Size	1 1/2"			24	24														
	2" Flange - 1 1/2" NPT Combo			32	32														
Section D																			
Inlet Port Type	Flange - NPT Combo			FNC	FNC														
	FSAE			S	S														
Section E																			
Port Size	1 1/2"			24	24														
	2" Flange - 1 1/2" NPT Combo			32	32														
Section F																			
Outlet Port Type	Flange - NPT Combo			FNC	FNC														
	FSAE			S	S														
Section G																			
Modules	2 Elements			M2	M2														
	3 Elements			M3	M3														
	4 Elements			M4	M4														
Section H																			
Micron Rating / Material	Material	Micron Nom.	Micron Abs.	Overall Length															
	3 Micron Cellulose	3	3C	7															
	10 Micron Cellulose	10	10C	7															
	25 Micron Cellulose	25	25C	7															
	3 Micron Micro Glass	3	3M	7															
	6 Micron Micro Glass	6	6M	7															
	12 Micron Micro Glass	12	12M	7															
	25 Micron Micro Glass	25	25M	7															
	10 Mic. Cellulose Water Abs.	10	10CA	7															
	100 Mesh 304 Stainless Steel		100S	7															
	3 Micron Cellulose	3	3CL	11															
	10 Micron Cellulose	10	10CL	11															
	25 Micron Cellulose	25	25CL	11															
	1 Micron Micro Glass	1	1ML	11															
	3 Micron Micro Glass	3	3ML	11															
	6 Micron Micro Glass	6	6ML	11															
	12 Micron Micro Glass	12	12ML	11															
	25 Micron Micro Glass	25	25ML	11															
	10 Mic. Cellulose Water Abs.	10	10CA	11															
	10 Mic. Micro Glass Water Abs.	10	10MA	11															
	100 Mesh 304 Stainless Steel		100SL	11															
Section I																			
O-Ring Material	Buna			N	N														
	Viton®			V	V														
	EPR			E	E														
Section J																			
By-Pass Setting	Non-Bypass			0	0														
	3 PSID			3	3														
	5 PSID			5	5														
	15 PSID			15	15														
	25 PSID			25	25														
	50 PSID			50	50														
Section K																			
Gauge Port Location	1/8" NPT Gauge Port Location																		
	Return Line			1	1														
	Return Line			2	2														
	Return Line			3	3														
Suction Line			5	5															
Section L																			
Indicators	Indicators																		
	No Indicator			0	0														
	Visual			V	V														
	Electrical			D	D														
	Vis/Ele w/Din43650			DIN	DIN														

Replacement Element:

Description					
Section A					
Element Size	Replacement Element - See Specification Chart	11			
	Element		E		
Section G					
Micron Rating	See Section H Above For Code			3C	
Section H					
O-Ring	See Section I Above For Code				N