

22 Series

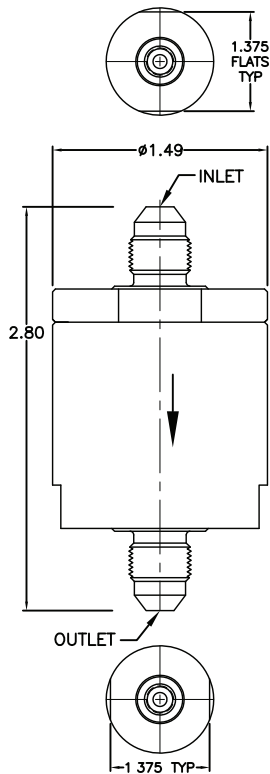
In-Line Filters



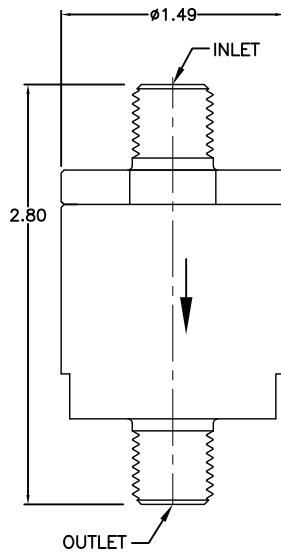
- 316 Stainless (6K)
- Flows up to 2.5 GPM or 75 SCFM
- Port Sizes Available in 1/8", 1/4" and 3/8"
- 316 Stainless Steel Pleated Disc
- Various Micron Ratings Available from 2 to 300 Micron
- Ideal for Applications with Limited Space
- Economical Filters for Test Stands, Meters, Gauges, Relief Valves and Both Hydraulic and Pneumatic Systems

MINI IN-LINE FILTERS

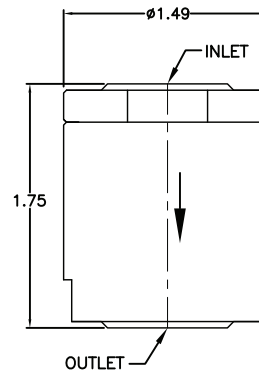
1/8, 1/4, & 3/8
MALE MS33656



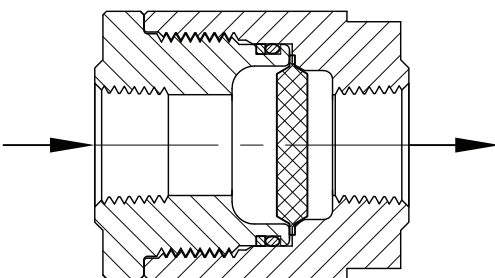
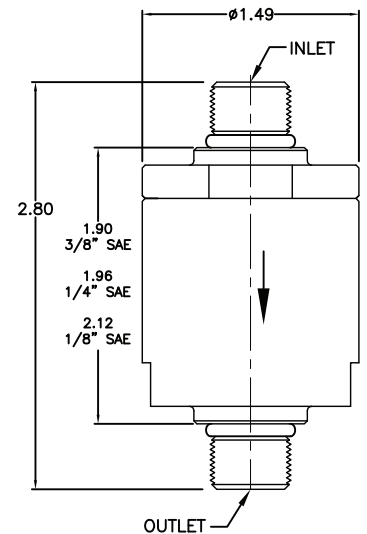
1/8, 1/4, 3/8
MALE NPT



1/8, 1/4, & 3/8
FEMALE NPT, SAE, AS5202



1/8, 1/4, & 3/8
MALE SAE



Pressure Ratings

Stainless (6K)

Operating: 6,000 PSI
Proof: 9,000 PSI
Burst: 24,000 PSI

Temperature Ratings

Elements

Stainless -425°F to +1000°F

O-Rings

Buna -40°F to +250°F
Viton -20°F to +400°F
EPR -60°F to +400°F
Kalrez -40°F to +550°F
Teflon Encapsulated Viton -4°F to +400°F

22 Series How to Order

Example Part Number

A	B	C	D	E	F	G	H		
22	T	-	2	P	2	P	-	10S	V

<i>Section A</i>	<i>Description</i>	<i>Code</i>
Filter Series	Mini In-Line Filters	22

<i>Section B</i>	<i>Description</i>	<i>Code</i>
Housing Material & Pressure	316 SS - 6000 PSI	T

<i>Section C</i>	<i>Description</i>	<i>Code</i>
Inlet Port Size	1/8"	2
	1/4"	4
	3/8"	6

<i>Section D</i>	<i>Description</i>	<i>Code</i>
Inlet Port Type	Male SAE	M
	Male NPT	N
	Female NPT	P
	Female SAE J1926	S
	37° Flare	T
	AS1098	C

<i>Section E</i>	<i>Description</i>	<i>Code</i>
Outlet Port Size	1/8"	2
	1/4"	4
	3/8"	6

<i>Section F</i>	<i>Description</i>	<i>Code</i>
Outlet Port Type	Male SAE	M
	Male NPT	N
	Female NPT	P
	Female SAE J1926	S
	37° Flare	T
	AS1098	C

<i>Section G</i>	<i>Material</i>	<i>Micron/Nom</i>	<i>Micron/Abs</i>
Micron Rating / Material	316 SSTL	2	10 10S
	316 SSTL	5	18 18S
	316 SSTL	10	25 25S
	316 SSTL	20	40 40S
	316 SSTL	40	75 75S
	316 SSTL	100	150 150S
	316 SSTL	200	300 300S

<i>Section H</i>	<i>Description</i>	<i>Code</i>
O-Ring Material	Buna	N
	Viton®	V
	EPR	E
	Teflon	T
	Kalrez®	K
	Teflon Encapsulated Viton	S

Replacement Element

A	B	C	G
22	E	-	10S

<i>Section A</i>	<i>Description</i>	<i>Code</i>
Element	Element Size	22

<i>Section B</i>	<i>Description</i>	<i>Code</i>
Element	Element	E

<i>Section G</i>	<i>Description</i>	<i>Code</i>
Micron / Material	See Section G Above for Code	10S



info@chasefiltercompany.com • 757-327-0036

Please visit: www.chasefiltercompany.com to download 3D Models & Step Drawings