

BASE PART #	METER SIZE	"A" DIMENSION	"B" DIMENSION	"C" DIMENSION
GRX0050-X	1/2"	1.38	0.61	2.6
GRX0075-X	3/4"	1.69	0.81	2.6
GRX0100-X	1"	2.00	0.95	2.6
GRX0125-X	1 1/4"	2.50	1.28	2.6
GRX0150-X	1 1/2"	2.88	1.51	2.6
GRX0200-X	2"	3.62	1.97	2.7
GRX0250-X	2 1/2"	4.12	2.37	2.9
GRX0300-X	3"	5.00	2.97	2.8
GRX0350-X	3 1/2"	5.50	3.45	3.0
GRX0400-X	4"	6.19	3.93	2.9
GRX0500-X	5"	7.31	4.95	2.8
GRX0600-X	6"	8.50	6.08	2.8
GRX0800-X	8"	10.62	7.99	2.9
GRX1000-X	10"	12.75	10.03	3.1
GRX1200-X	12"	15.00	12.01	3.5
GRX1400-X	14"	16.25	13.26	3.9
GRX1600-X	16"	18.50	15.26	4.0
GRX1800-X	18"	21.00	17.26	3.5
GRX2000-X	20"	23.00	19.26	3.8
GRX2200-X	22"	25.25	21.26	3.6
GRX2400-X	24"	27.25	23.26	3.9

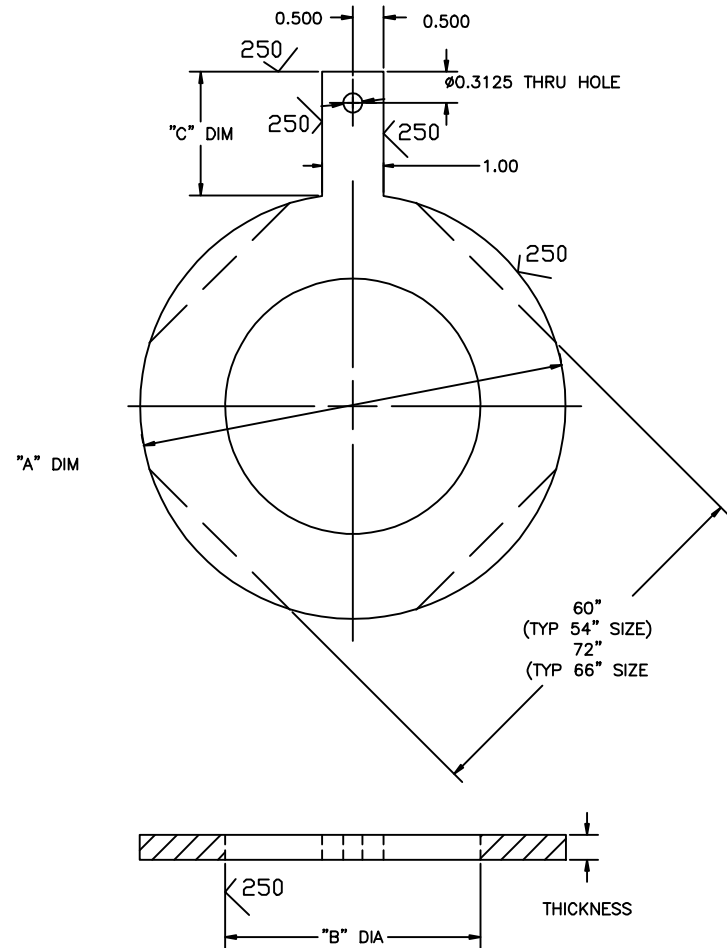
GROUNDING RING PART NUMBER


GRXXXX - X

MATERIAL: S-304 SST, T-316 SST, M-MONEL, H-HATSALLOY C

METER OR PIPE SIZE: 1/2"-0050, 12"-1200

THICKNESS: 0 - .0625", 1 - .125"



0	1-27-20	PTS	INITIAL RELEASE
REV.	DATE	CHG BY	DESCRIPTION OF CHANGE
REVISION HISTORY			
MATERIAL			 <p>CHASE FILTERS &amp; COMPONENTS</p> <p>THIS DOCUMENT AND ITS CONTENT IS PROPERTY OF CHASE FILTERS AND COMPONENTS. IT MAY NOT BE COPIED, REPRODUCED, PROMISED, OR REVEALED TO ANY OTHER PARTY WITHOUT WRITTEN AUTHORIZATION.</p>
FINISH			
<small>ALL PARTS MUST BE CLEANED FOR OXYGEN SERVICE PER ASTM SPEC 008. GLOVES MUST BE WORN DURING PART HANDLING</small>			
<small>UNLESS OTHERWISE SPECIFIED: A &amp; B AS A.B. AS A.B. FIELD AT CORNER DRILLS AS-80 FILLET RAS AS-80 SURFACE FINISH: 32 THREAD CLASS 2 THREAD LENGTHS ARE FULL THREAD END OF SCALE FINISH DRILLING</small>		<small>SCALE: NTS</small> <small>DRAWN BY: PTS</small> <small>DATE: 1-27-20</small> <small>APPROVED BY: PTS</small> <small>DATE: 1-27-20</small>	<small>DESCRIPTION</small> <b>GROUNDING RING 1-24"</b> <small>CHASE CODE</small> <small>47547</small> <small>PART NUMBER</small> <b>GR00000-X</b> <small>SIZE</small> <b>C</b>
<small>THIS IS A PRELIMINARY DRAWING</small>		<small>QTY.</small> 1	<small>OF</small> 1